



SMOKE AND HEAT
Exhaust systems

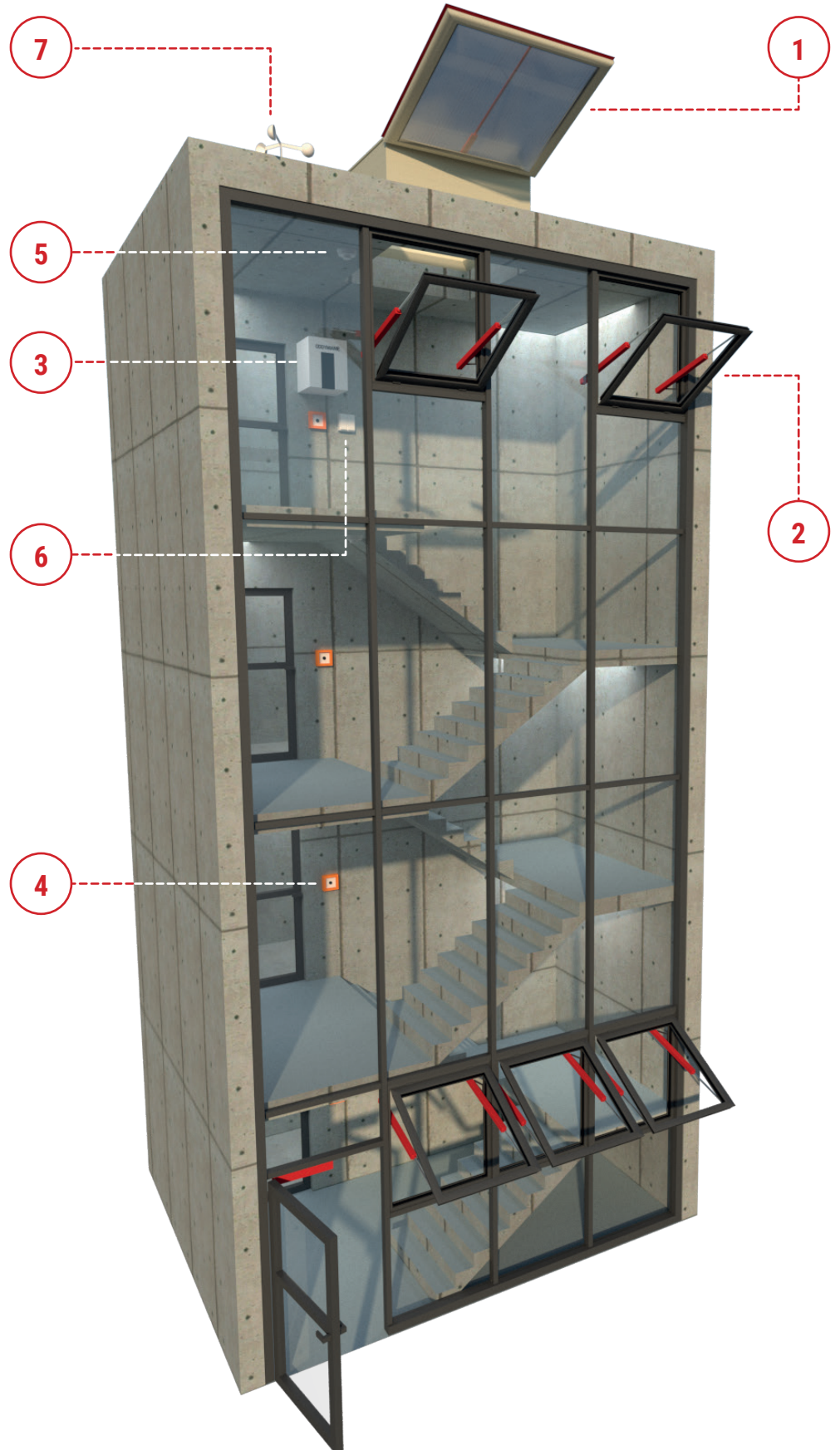
**mcr THERM
SYSTEM**

staircases

COMPLETE SYSTEM FOR STAIRCASES

Staircases are the main way of safe evacuation, which is why it is so important to equip them with an efficient smoke exhaust system. It is used to remove smoke, fire gases and thermal energy generated during a fire.

The **mcr THERM SYSTEM** complete smoke exhaust system for staircases proposed by **MERCOR** consists of smoke exhaust and/or daily ventilation devices as well as control equipment.



Smoke exhaust vent mcr ULTRA THERM

Function: smoke exhaust, daily ventilation and roof access

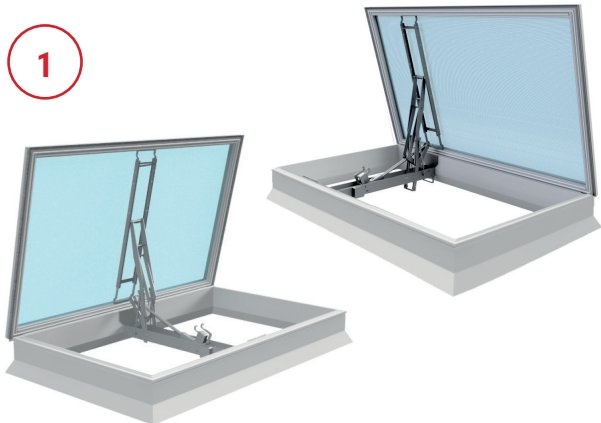
Dimensions min.: 100x100 cm or 80x120 cm

Dimensions max.: 200x300 cm

Design: modular PVC base or folded base

Glazing: multi-chamber polycarbonate plates, acrylic or solid polycarbonate domes, mixed glazing

Control: electric 24 V- / 48 V- / 230 V~



Smoke exhaust windows mcr OSO THERM 75

Function: smoke exhaust and daily ventilation

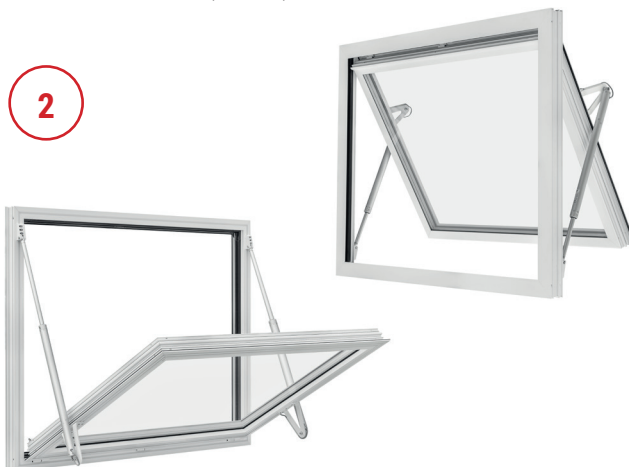
Dimensions min.: 80x80 cm

Dimensions max.: 270x130 cm or 160x220 cm

Design: thermally broken multi-chamber aluminium profiles

Glazing: glazing unit or sandwich panel

Control: electric 24 V- / 48 V- / 230 V~



Control unit mcr SVM

mcr SVM 24V-5A / mcr SVM 24-8A

In accordance with EN12101-10:2005 – class A (double power supply)

Power supply voltage: 230 V~ (1,2 A/1,7 A)

Output voltage: 24 V-

No. of outputs: 1 (1 fire zone / 1 comfort ventilation group)

Max. total load: 5 A / 8 A

Operation time without main voltage source: 72 h

Dimensions: 238 x 113 x 286 mm

Control unit mcr SV

mcr SV 24V-xx-ds / mcr SV 48V-xx-ds

In accordance with EN12101-10:2005 – class A (double power supply)

Power supply voltage: 230 V~ (5 A/10 A)

Output voltage: 24 V- lub 48 V-

No. of outputs: 2 (2 fire zones / 2 comfort ventilation groups)

Max. total load: 8 A / 24 A / 30 A / 32 A

Operation time without main voltage source: 72 h

Dimensions: 343 x 178 x 450 mm



4

**Emergency pushbutton
mcr BVT**



5

**Optical smoke
sensor**

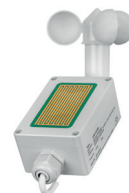


6

**Ventilation
pushbutton LT**



**Remote control
FLEX**



7

**Rain-wind sensor
AR | AWR**

**OUR PRODUCTS
ARE PRESENT
IN THE FOLLOWING
COUNTRIES:**



**SMOKE
VENTS IN
CONTINUOUS
ROOFLIGHTS**



**SMOKE
CURTAINS**



**FIRE
DAMPERS**



**SMOKE AND
VENTILATION
VENTS,
ROOF ACCESS
HATCHES**



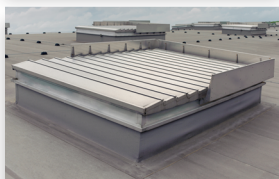
**SMOKE
AND HEAT
EXHAUST
WINDOW
SYSTEM**



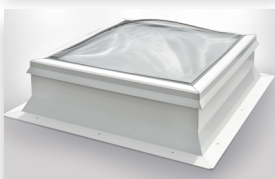
**SMOKE
VENTILATORS**



**LOUVERED
SMOKE
VENTS**



**PVC SMOKE
VENTS AND
SKYLIGHTS**



**BUILDING
STRUCTURE
PROTECTIONS**



YOUR DIRECT CONTACT:

HEADQUARTERS GDAŃSK

ul. Grzegorza z Sanoka 2
80-408 Gdańsk

☎ +48 58 341 42 45

✉ ho.export@merc.com.pl

WWW.MERCOR.COM.PL